

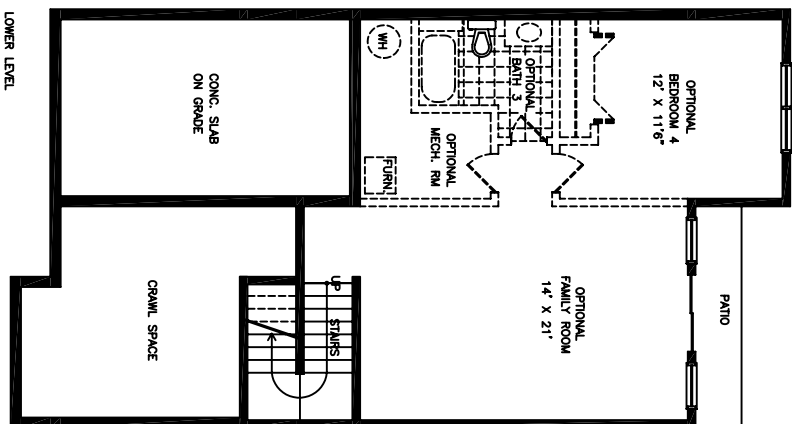
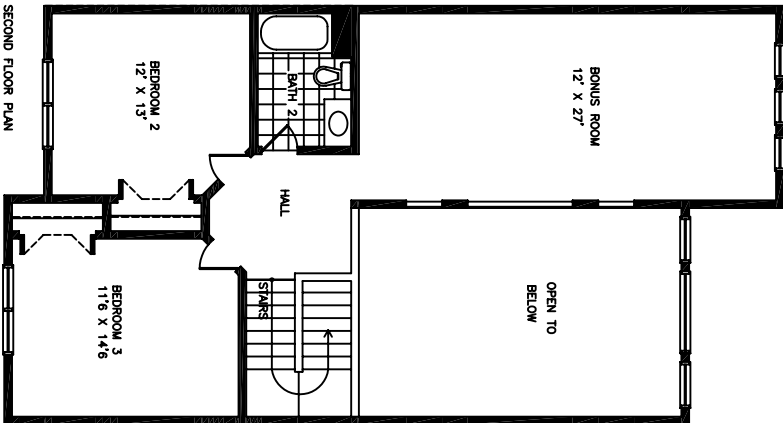
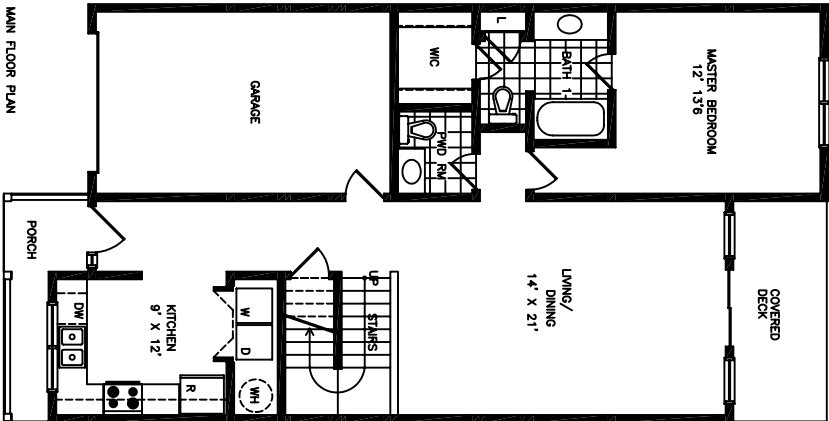
Dover

Three Bedrooms Two Bathrooms Powder Room

SQUARE FOOTAGE
 HEATED MAIN LEVEL 1007 SQ. FT.
 HEATED UPPER LEVEL 980 SQ. FT.
 TOTAL HEATED 1987 SQ. FT.
 GARAGE 242 SQ. FT.
 COVERED PORCH/
 FRONT PORCH 145 SQ. FT.
 OPTIONAL FINISHED BASEMENT 760 SQ. FT.



MEASUREMENTS ARE APPROXIMATE.
 FINISHED SQUARE FOOTAGES MAY VARY WITHIN
 REASONABLE LIMITS.
 PLANS AND SPECIFICATIONS ARE SUBJECT TO
 BUILDERS REVISIONS WITHOUT NOTIFICATION.



GLADE HOMES, INC.
 www.gladehomes.com
 1-866-GO-GLADE